

# SHARP

## TU SERIES



### WALL MOUNTED HEAT PUMPS

12 000 BTU, 15 000 BTU, 18 000 BTU & 24 000 BTU  
AY-XPC12TU, AY-XPC15TU, AY-XPC18TU & AY-XP24TU

Up to 11.4 HSPF



\*APPROVED FOR PROVINCIAL EFFICIENCY REBATES



A PIONEER IN THE SEARCH FOR THE HIDDEN VALUES OF AIR

Models Number	AY-XP12THU ENERGY STAR		AY-XP18THU		
Cooling Capacity (Btu/h)	11,500		17,000		
Cooling Capacity Min - Max (Btu/h)	4,000-13,500		6,000-19,000		
Heating Capacity (Btu/h)	14,000		21,600		
Heating Capacity Min - Max (Btu/h)	3,500-22,000		5,000-28,000		
EER	15.0		11.5		
HSPF (IV)	12.7		13.5		
SEER	24.0		21.0		
Cooling Operating Range Outside °F(°C)	14~115 (-10~46)		14~115 (-10~46)		
Heating Operating Range Outside °F(°C)	-13~75 (-25~24)		-13~75 (-25~24)		
Dehumidification pt./h	1.6		3.7		
Voltage/Frequency/Phase	208-230/60/1		208-230/60/1		
Maximum Fuse Size (A)	15		20		
Air Flow (CFM) : Super High	523		547		
High	491		512		
Medium	364		364		
Low	251		251		
Noise Level (dB) : Super High	47		50		
High	45		47		
Medium	41		41		
Low	34		31		
Fan Speed, Stage	5 + auto		5 + auto		
Air Flow Direction: Horizontal	Automatic		Automatic		
Air Flow Direction: Vertical	Automatic		Automatic		
Air Filter	Washable		Washable		
Connection Method	Flare		Flare		
Max Pipe Length ft. (m)	49 (15) (pre-charge: 50')		49 (15) (pre-charge: 50')		
Max Height Difference ft. (m)	33 (10)		33 (10)		
Pipe Diameter	Gas 3/8	Liquid 1/4	Gas 3/8	Liquid 1/4	
Net Weight lb (kg)	40 (18) 93 (42)		40 (18) 95 (43)		
Dimensions: Width in	31-7/16 31-1/2		31-7/16 31-1/2		
Height in	11-5/8 24-13/16		11-5/8 24-13/16		
Depth in	13-13/16 11-13/16		13-13/16 11-13/16		
<b>SHARP</b>		AY-XP12THU INTERIOR	AE-X12THU EXTERIOR	AY-XP18THU INTERIOR	AE-X18THU EXTERIOR



## Plasmacluster Technology

SHARP's unique bacteria-removing Plasmacluster Technology suppresses airborne viruses, and breaks down and removes airborne mold and other contaminants.

### Plasmacluster Key Benefits

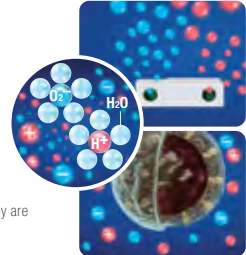
- Suppresses the activity of airborne viruses
- Suppresses the activity of airborne microbes
- Acts on both airborne and adhering mold
- Inactivates and removes airborne allergens like dust mite feces and dead dust mites
- Inactivates and removes adhering odours (like tobacco smoke)
- Removes static electricity which attracts airborne particles
- Plasmacluster is effective all year round



### Plasmacluster's Microbe-Removing Mechanisms

#### 1 Ions are released.

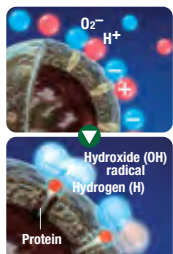
Plasmacluster Ions, the same positive and negative ions found in nature, are generated by plasma discharge and released into the air.



The ions are long-lasting\*3 because they are surrounded by water molecules.

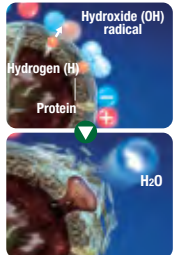
#### 2 The ions act on airborne microbes.

The ions form hydroxide (OH) radicals that are highly oxidizing only when they adhere to the surfaces of mold and viruses. They instantly remove the hydrogen from the surface proteins, breaking them down.



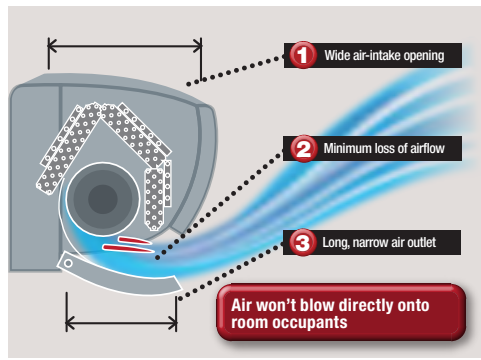
#### 3 The broken-down components return to the air as water.

The hydroxide (OH) radicals combine with hydrogen (H) to form water (H2O), which returns to the air.



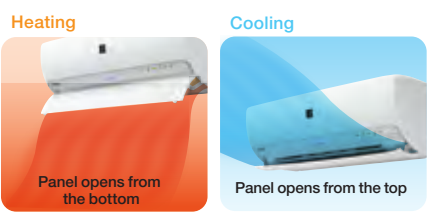
## Long Coanda<sup>1</sup> Airflow System

Long diffuser panel<sup>2</sup> opens from the top and bottom



## OUTSTANDING ENERGY EFFICIENCY

THU Series air conditioners achieve a SEER (Seasonal Energy Efficiency Ratio) of up to 24.0 for cooling and an HSPF (Heating in Seasonal Performance Factor) of up to 13.5. AY-XP12THU is also certified for ENERGY STAR®, which is a US Environmental Protection Agency program for identifying energy-efficient products.



### Operation: Functions



ON COMPRESSOR

ON PARTS



# SHARP

• Plasmacluster cannot create a completely sterile environment, or ensure prevention of infection. • The actual number of ions and effectiveness of microbe removing\*1 and purifying\*2 depend on the room conditions and the operation methods, including room size or shape, whether air conditioning or ventilation is used, product placement, direction of ion discharge, and operation mode. \*1 Airborne viruses are suspended in a 1m<sup>3</sup> box, and the percentages of the viruses removed after 10 minutes are measured. Suspended microbes subjected to Plasmacluster air purification are measured after 38 minutes in a testing room of about 40 m<sup>3</sup>. Test results may differ results in actual room conditions. \*2 The effectiveness depends on the surrounding conditions (e.g., temperature, humidity and airflow), usage time and method. \*3 Verified in SHARP test comparisons of ions not surrounded by water molecules.



67 Crane Lake Drive, Halifax, CANADA, NS B3S 1B5  
1-800-565-8771 • WWW.CURTISAGENCIES.CA

# SHARP

## THU SERIES



## WALL MOUNTED HEAT PUMPS

12 000 BTU & 18 000 BTU  
AY-XP12THU & AY-XP18THU

Up to 13.5 HSPF

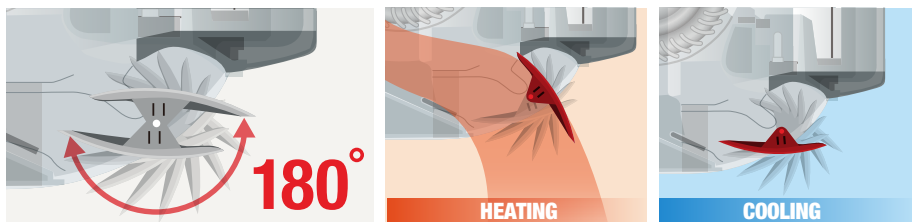


\*APPROVED FOR PROVINCIAL EFFICIENCY REBATES



A PIONEER IN THE SEARCH FOR THE HIDDEN VALUES OF AIR

Models Number	AY-XPC12TU ENERGY STAR		AY-XPC15TU ENERGY STAR		AY-XPC18TU ENERGY STAR		AY-XP24TU		
Cooling Capacity (Btu/h)	11,500		14,000		17,000		22,000		
Cooling Capacity Min - Max (Btu/h)	4,000-13,500		5,000-14,000		6,000-19,000		6,000-22,000		
Heating Capacity (Btu/h)	14,000		18,000		21,600		24,000		
Heating Capacity Min - Max (Btu/h)	3,500-18,000		4,500-20,000		5,500-25,000		5,500-26,000		
EER	12.5		12.5		12.5		9.0		
HSPF (IV)	11.4		9.6		10.6		10.0		
SEER	22.5		21.5		21.0		19.0		
Cooling Operating Range Outside °F(°C)	14-115 (-10-46)		14-115 (-10-46)		14-115 (-10-46)		14-115 (-10-46)		
Heating Operating Range Outside °F(°C)	-4-75 (-20-24)		-4-75 (-20-24)		-4-75 (-20-24)		-4-75 (-20-24)		
Dehumidification pt./h	3.2		3.2		5.1		6.8		
Voltage/Frequency/Phase	208-230/60/1		208-230/60/1		208-230/60/1		208-230/60/1		
Maximum Fuse Size (A)	15		15		20		25		
Air Flow (CFM) : Super High	408		504		512		545		
High	381		467		478		512		
Medium	330		410		420		444		
Low	214		306		310		344		
Noise Level (dB) : Super High	45		47		48		50		
High	44		44		45		49		
Medium	39		41		42		44		
Low	27		32		33		36		
Fan Speed, Stage	5 + auto		5 + auto		5 + auto		5 + auto		
Air Flow Direction: Horizontal	Manual		Manual		Manual		Manual		
Air Flow Direction: Vertical	Automatic		Automatic		Automatic		Automatic		
Air Filter	Washable		Washable		Washable		Washable		
Connection Method	Flare		Flare		Flare		Flare		
Max Pipe Length ft. (m)	66 (20) (pre-charge: 33')		66 (20) (pre-charge: 33')		66 (20) (pre-charge: 33')		66 (20) (pre-charge: 33')		
Max Height Difference ft. (m)	33 (10)		33 (10)		98 (30)		98 (30)		
Pipe Diameter	Gas 3/8	Liquid 1/4	Gas 1/2	Liquid 1/4	Gas 1/2	Liquid 1/4	Gas 1/2	Liquid 1/4	
Net Weight lb (kg)	21 (9.5)	85 (38.5)	26 (11.5)	91 (41)	29 (13)	103 (46.5)	29 (13)	103 (46.5)	
Dimensions: Width in	36-7/32	30-23/32	38	33-15/32	38	33-15/32	38	33-15/32	
Height in	11-13/32	21-1/4	12-5/16	27-15/16	12-5/16	27-15/16	12-5/16	27-15/16	
Depth in	9-7/16	10-19/32	9-27/32	13	9-27/32	13	9-27/32	13	
<b>SHARP</b>		AY-XPC12TU INTERIOR	AE-X12TU EXTERIOR	AY-XPC15TU INTERIOR	AE-X15TU EXTERIOR	AY-XPC18TU INTERIOR	AE-X18TU EXTERIOR	AY-XP24TU INTERIOR	AE-X24TU EXTERIOR



## Reverse Swing Louver Rotates 180°

Measuring from the center, the louver rotates approximately 180° degrees. This creates an optimal air current for heating or cooling. You can also set the louver angle as you want using the remote control.



ON COMPRESSOR



ON PARTS

# SHARP

• Plasmacluster cannot create a completely sterile environment, or ensure prevention of infection. • The actual number of ions and effectiveness of microbe removing\*1 and purifying\*2 depend on the room conditions and the operation methods, including room size or shape, whether air conditioning or ventilation is used, product placement, direction of ion discharge, and operation mode. \*1 Airborne viruses are suspended in a 1m<sup>3</sup> box, and the percentages of the viruses removed after 10 minutes are measured. Suspended microbes subjected to Plasmacluster air purification are measured after 38 minutes in a testing room of about 40 m<sup>3</sup>. Test results may differ results in actual room conditions. \*2 The effectiveness depends on the surrounding conditions (e.g., temperature, humidity and airflow), usage time and method. \*3 Verified in SHARP test comparisons of ions not surrounded by water molecules.



## Plasmacluster Technology

SHARP's unique bacteria-removing Plasmacluster Technology suppresses airborne viruses, and breaks down and removes airborne mold and other contaminants.

### Plasmacluster Key Benefits

- Suppresses the activity of airborne viruses
- Suppresses the activity of airborne microbes
- Acts on both airborne and adhering mold
- Inactivates and removes airborne allergens like dust mite feces and dead dust mites
- Inactivates and removes adhering odours (like tobacco smoke)
- Removes static electricity which attracts airborne particles
- Plasmacluster is effective all year round

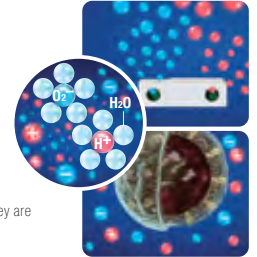


### Plasmacluster's Microbe-Removing Mechanisms

#### 1 Ions are released.

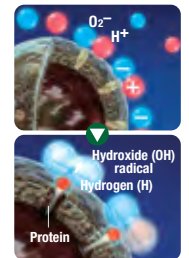
Plasmacluster Ions, the same positive and negative ions found in nature, are generated by plasma discharge and released into the air.

The ions are long-lasting\*3 because they are surrounded by water molecules.



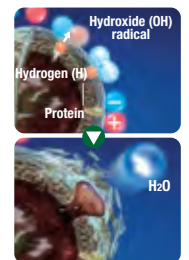
#### 2 The ions act on airborne microbes.

The ions form hydroxide (OH) radicals that are highly oxidizing only when they adhere to the surfaces of mold and viruses. They instantly remove the hydrogen from the surface proteins, breaking them down.



#### 3 The broken-down components return to the air as water.

The hydroxide (OH) radicals combine with hydrogen (H) to form water (H2O), which returns to the air.



### Operation: Functions



67 Crane Lake Drive, Halifax, CANADA, NS B3S 1B5  
1-800-565-8771 • WWW.CURTISAGENCIES.CA